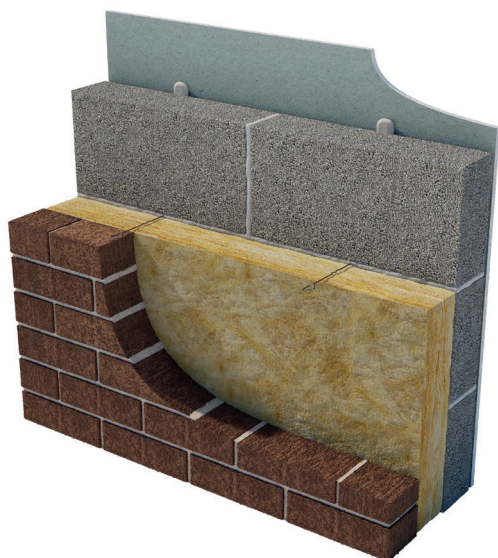


Superwall 36 Cavity Batt.

February 2025 | Data Sheet



Description.

Superglass Superwall 36 is a British Board of Agrément (BBA) approved, non-combustible glass mineral wool insulation cavity wall batt, manufactured with a water-repellent additive to resist moisture ingress. The flexible batt is supplied at 455mm wide to allow friction fitting between standard vertical wall tie spacings, reducing the need for on-site cutting and waste.

Application.

Superglass Superwall 36 is designed to provide thermal insulation in full or partial fill in new external masonry cavity walls, up to 25 metres in height for full fill and without restriction for partial fill in buildings of a domestic and non-domestic nature. Additional requirements apply for buildings above 12 metres in height for full fill and above 25 metres in height for partial fill, please refer to the product BBA certificate for more information.

Superwall 36 is BBA approved for use in all UK exposure zones (subject to conditions detailed in the BBA Certificate).



Performance.

Thermal Conductivity:


Declared thermal conductivity (lambda (λ) value) of 0.036W/mK.

Fire Classification:

Deemed non-combustible with a fire classification of Euroclass A1 (the highest possible rating) when tested to BS EN 13501-1:2018 Reaction to Fire.



Typical applications:
External masonry cavity walls.



Thermal
Insulation



Non-
combustible



Recycled
Glass Content

Intelligent Environments
Superglass

superglass.co.uk

Superwall 36 Cavity Batt.

Technical Characteristics.

Product Specification.

Thickness (mm)	Length (mm)	Width (mm)	Batts per pack	Pack Area (m ²)	Packs per pallet	Thermal Conductivity (W/mK)	Thermal Resistance (m ² K/W)	Product Code
50	1200	455	16	8.736	30	0.036	1.35	2144288
75	1200	455	10	5.460	30	0.036	2.05	2144289
85	1200	455	8	4.368	30	0.036	2.35	2144405
90	1200	455	8	4.368	30	0.036	2.50	2144817
100	1200	455	8	4.368	30	0.036	2.75	2144290
125	1200	455	6	3.276	30	0.036	3.45	2144406
150	1200	455	6	3.276	30	0.036	4.15	2144291

Please note that all dimensions are nominal.

Additional Information.

Vapour Resistivity.

The product has a nominal vapour resistivity of 5 MNs/gm.

Water Resistance.

Constructions incorporating the product and built in accordance with the Standards listed in section 4.4 of BBA Certificate 89/2231 Product Sheet 2, will resist the transfer of precipitation to the inner leaf and satisfy the national Building Regulations.

Below DPC level.

The product may be used in situations where it bridges the DPC in walls; dampness from the ground will not pass through to the inner leaf provided the wall is detailed in accordance with the requirements and provisions of the national Building Regulations.

Environmental credentials.

- Our products and their pallets are wrapped in low-density polyethylene (LDPE4) plastic, which contains a minimum 30% recycled material and is fully recyclable. Before recycling, please consult your local authority for guidance.
- ISO 14001:2015 – Environmental Management Systems (EMS) certified. Certificate number: EMS 646508.
- Contains no ozone-depleting substances or greenhouse gases. For more information, please refer to the Environmental Product Declaration (EPD).
- Made from up to 84% recycled glass.
- Generic BRE Green Guide Rating of A+.

Standards and Approvals.

Manufactured in accordance with:

- BS EN 13162:2012(+A1:2015) Thermal insulation products for buildings - Factory made mineral wool (MW) products.

- BS EN 13172: 2012 Thermal insulation products – Evaluation of conformity.
- ISO 9001:2015 – Quality Management Systems (QMS). Certificate number: FM 02264.

Certifications.

- UKCA certified to BS EN 13162:2012+A1:2015. Certificate number: 0086 CPR 469699.
- CE marked to BS EN 13162:2012+A1:2015. Certificate number: 0751-CPR-399.0-01.
- BBA certified for full and partial fill applications. Certificate number: 89/2231.
- CCPI (Code for Construction Products Information) Verification Mark. Certificate number: 005800103/1026.

A copy of the product Declaration of Performance (DoP) can be downloaded from the Superglass website.

Handling & Storage.

The product should be stored properly and handled in such a way as to ensure that the product remains clean and undamaged.

The product is supplied compression packed in polythene to provide short term protection only. For long term protection, the product must be stored indoors, or under a waterproof covering and off the ground to protect from weather damage. The product should not be left permanently exposed to the elements.

All Superglass products are non-hygroscopic, will not rot, degrade, or sustain vermin and will not encourage the growth of mould, bacteria, or fungi.



Etex UK Insulation Ltd | Thistle Industrial Estate | Kerse Road | Stirling | FK7 7QQ | UK

S3607
February 2025

Technical

Hotline: **0808 1645 134**
Email: technical.stirling@etexgroup.com

Customer Services

Tel: **01786 451170**
Email: customerservice.stirling@etexgroup.com

Social

- ✕ [superglass_uk](#)
- in [superglassuk/](#)
- f [superglassinsulationuk](#)

REF:5010

All rights are reserved, including those of photomechanical reproduction and storage in electronic media. Commercial use of the processes and work activities presented in this document is not permitted. Extreme caution was observed when putting together the information, texts, and illustrations in this document. Nevertheless, errors cannot quite be ruled out. The publisher and editors cannot assume legal responsibility or any liability whatever for incorrect information and the consequences thereof. The publisher and editors will be grateful for improvement suggestions and details of errors pointed out. Please check this is the current version by visiting the Superglass website. For archived versions please contact the Technical Services Team.

etex inspiring ways of living